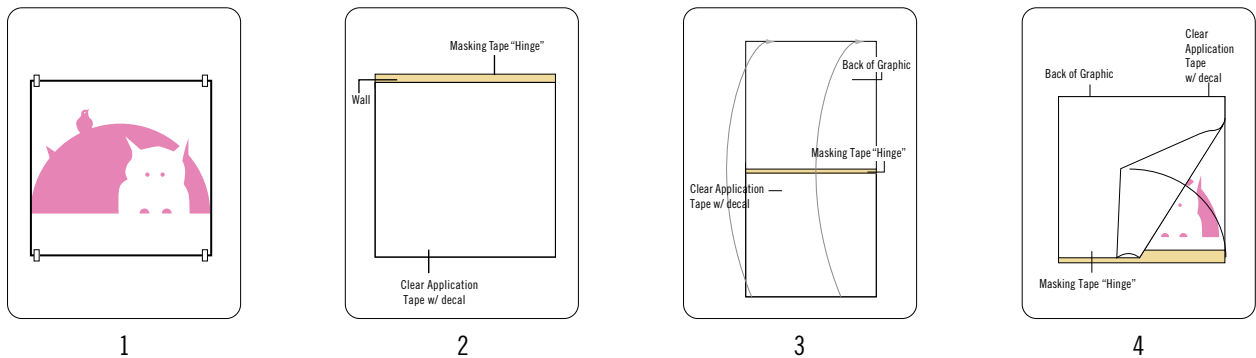
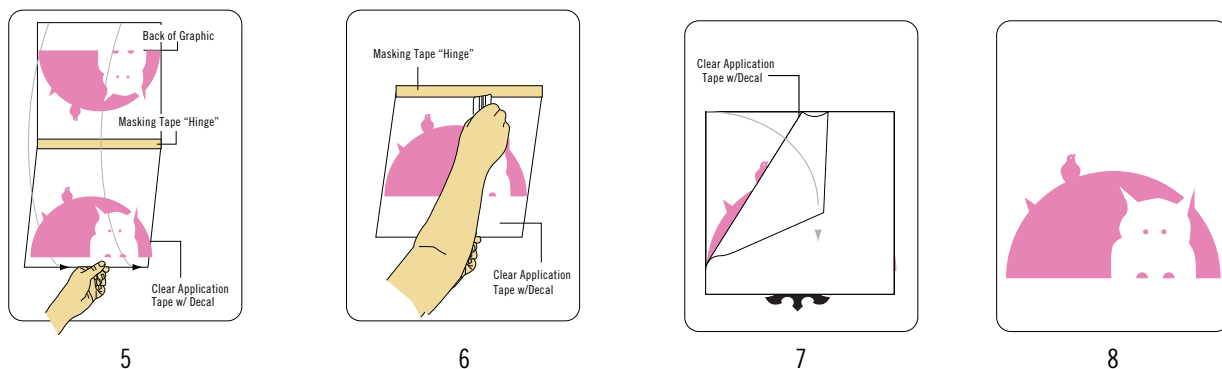


## wall decal application instructions

- Location:** Choose a suitable location for the graphic(s). The vinyl decals look and adhere best to a wall with little or no texture. If applying decal to a window or tile, make sure the surface is clean and dry. Avoid using chemical cleaners that may react with the water-based vinyl adhesive. The decals are sensitive to extreme temperatures and sunlight. If they become too hot, they may peel off the surface. *Tip...a blow-dryer is a simple way to remove a decal!*
- Position:** While the vinyl-layer is still stuck to the back paper, place decal on the wall with low-tack masking tape. Align the wall decal or overlap graphics until you get the arrangement just right (fig 1). The decals cannot be repositioned once stuck, so plan your design wisely!
- Install:** Apply masking tape across the top of the decal, making a 'hinge' with the wall (fig 2). To make the graphic stick, start to peel away the back paper from the vinyl wall decal. Peel back a corner edge slowly leaving the decal stuck to the clear application tape (fig 3 & 4). If part of the decal should stick to the backing paper, rub the backing paper in the problem area and continue peeling. Careful – the back surface is now sticky!



- Bring decal down, pulling slightly from wall to keep it taut (fig 5). Working from the 'hinge', use an application tool with a smooth surface and hard edge. A credit card, CD case or a squeegee. Be careful not to tear or rip vinyl. Smooth over the entire decal with firm pressure, applying the graphic to your wall. Make sure to smooth over the whole surface with even pressure (fig 6).
- Remove clear application tape by starting from a corner and slowly peeling back tape at a 180° angle, making sure that the decal is stuck to your wall as you pull (fig 7). If the part of the decal should stick to the clear application tape instead of the wall, don't panic! Stop peeling, lay decal back on the wall, smooth over problem area, and continue peeling. Once done, stand back and admire your craftiness! (fig 8)



**Removal:** Use a fingernail to gently pry up one corner of the decal and slowly pull from wall. The wall graphics have been tested and successfully removed on a variety of surfaces, including, sealed concrete floors, appliances, mirrors, windows, tiles and painted walls without chipping or peeling of the painted surface. However, Kartwheel cannot be held liable for hard-to-remove graphics or possible damage to under surfaces.